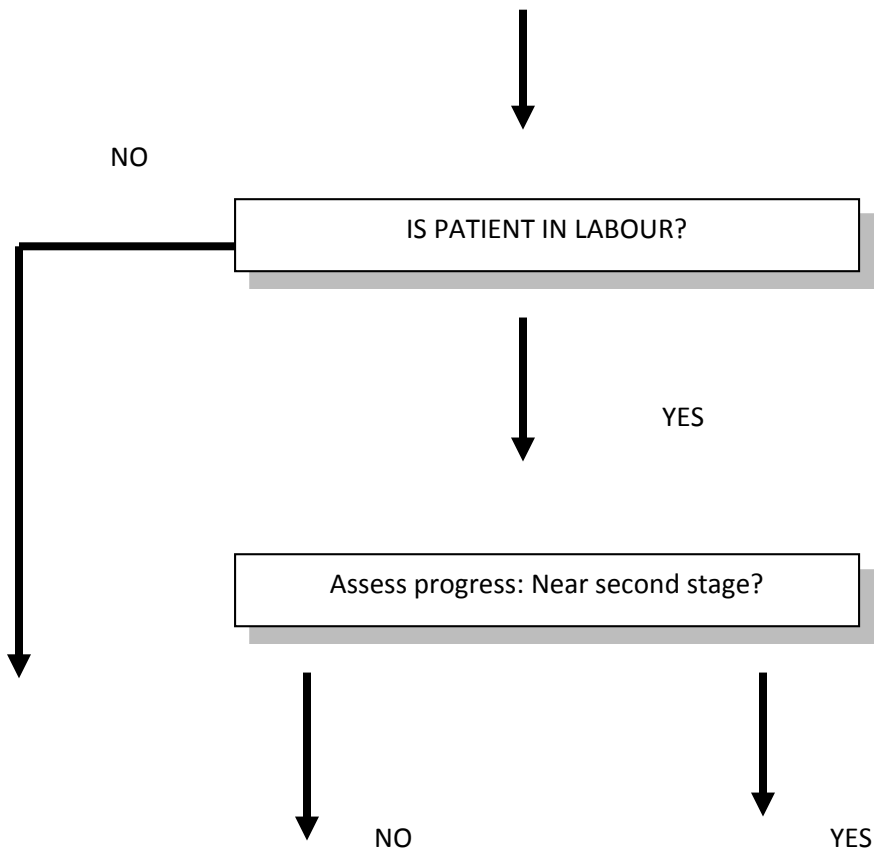


ECLAMPSIA MANAGEMENT FLOW CHART

-
-
- Prevent her from hurting herself
- Give a loading dose of 10g (50%) IM
- Insert catheter
- Give
- Monitor



REFER immediately with an escorting nurse



- Monitor urine output
- Monitor
- Deliver with vacuum extraction
- Perform active management of third stage of labour (Do not use ergometrine)

↓ REFER

At Hospital:

-
- Start or continue with MgSO₄ as per protocol
- Insert catheter and monitor urine output
- Start or continue with intravenous hydralazine 10mg slowly every half hour until diastolic BP falls to 100mmHg
- Monitor vital signs
- If not yet delivered, deliver the woman 6-8hours after the fits. Perform C/S if indicated.